

SETUP GUIDE

READ FIRST

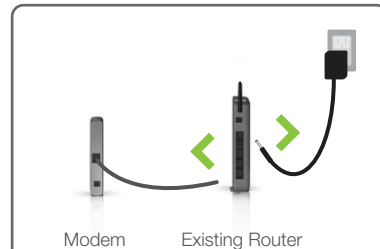
HELIOS HIGH POWER™ AC2200 TRI-BAND WI-FI ROUTER

RTA2200T

▶ Watch the Installation Video here: <http://support.ampedwireless.com/rta2200t>

1 Disconnect & Power Off your Existing Router (if available)

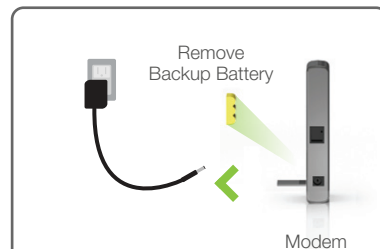
Disconnect your existing router from your computer, your broadband modem, and a power outlet. If you do not have an existing router please continue to Step 2.



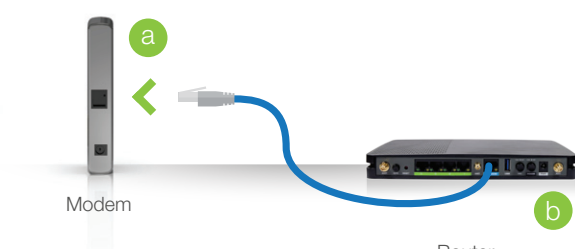
2 Power Off your Modem

Power off the modem by disconnecting the modem's power adapter from the power outlet. If your modem has a backup battery, remove the backup battery from your modem.

Do NOT power on your modem until Step 4.



3 Connect the Router to your Modem



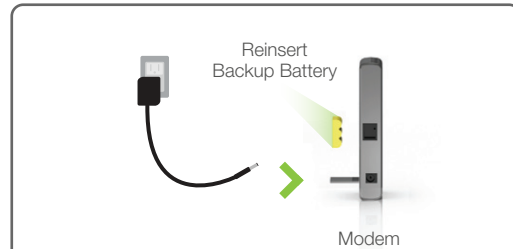
- a Use the included Ethernet cable and connect one end of the cable to your modem.
- b Connect the other end of the cable to the blue **Modem** port on the Router.

Do NOT connect the power adapter to the Router at this time.

4 Power On your Modem

Plug in the power adapter and reinsert the backup battery (if available) to power on the modem.

Allow a minute or two for the modem to initiate.

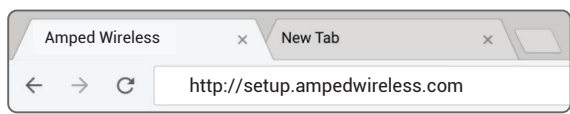


5 Attach Antennas, Power On & Connect to the Router



- a Attach the antennas to the Router.
- b Attach the Power Adapter to the Router's **PWR** port and a power outlet.
- c Connect your tablet, smart phone or PC to the Router's Wi-Fi network: **Amped_Helios**
 Security key: **wireless** (see back for detailed instructions)
 - or -
 Connect an Ethernet cable between your PC and a green wired port on the back of the Router.

6 Open your Web Browser



Recommended browsers: Google Chrome, Safari or Internet Explorer (8.0 and up). Do not use Firefox.

Enter the setup web address into your browser:

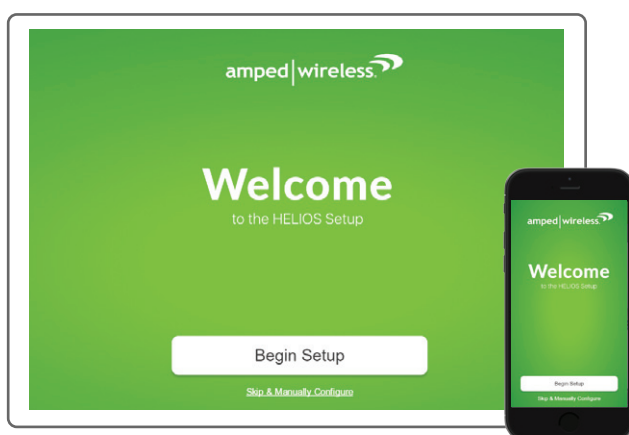
<http://setup.ampedwireless.com>

If the URL fails to open, then try: <http://192.168.3.1>

ACCESSING THE WEB MENU DOES NOT REQUIRE INTERNET ACCESS. THE MENU IS SERVED FROM THE ROUTER.

If you have problems accessing the web menu...
 Disable third-party firewalls, such as North, ZoneAlarm, or Windows Defender.
 Disconnect from all wireless networks and use a wired connection to the Router. Try again.

7 Welcome to the Setup Wizard

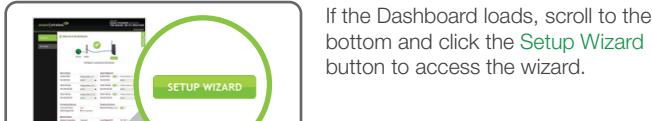


Setup screens for mobile devices will vary from desktop and tablet versions.

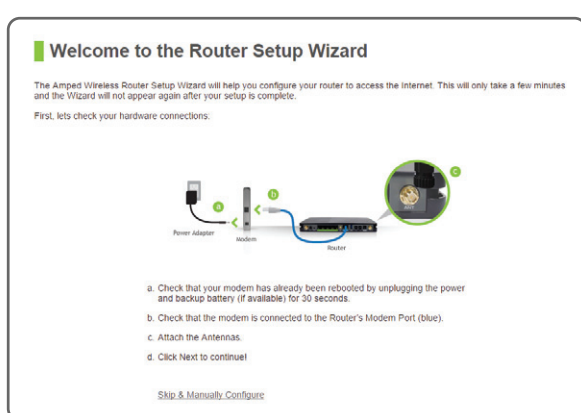
If this is your first time setting up the Router, the Setup Wizard should automatically load.

Click **Begin Setup** to continue.

If you wish to manually configure your Router, you can skip the Setup Wizard.



If the Dashboard loads, scroll to the bottom and click the **Setup Wizard** button to access the wizard.

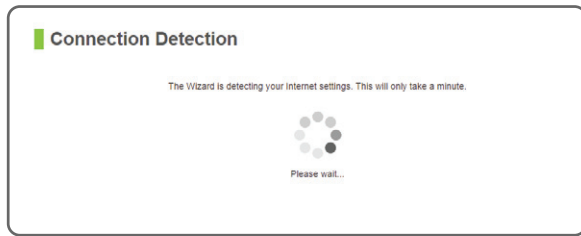


Double check that the modem is connected to the Router's Modem port.

Check that your antennas are all attached firmly to the antenna connectors.

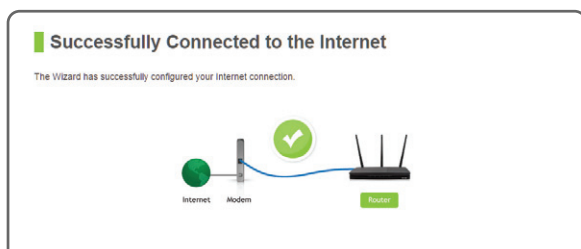
Click **Next** to continue.

8 Internet Connection Detection



The Wizard will try to detect your Internet settings and configure the Router. Please be patient.

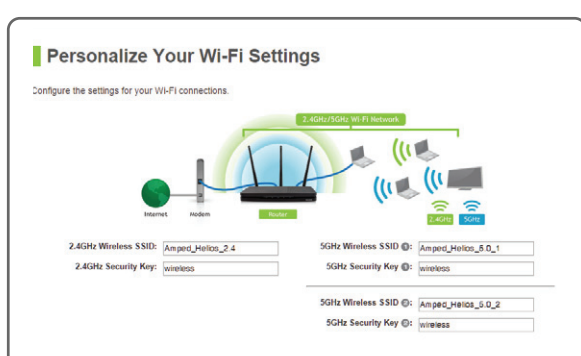
If there is a problem with your Internet connection or if your Internet provider requires that you log in before accessing the Internet, a prompt will appear notifying you of the issue.



Once your Wizard has configured your Internet settings, you should see a green check mark.

Click **Next** to continue.

9 Personalize your Wi-Fi Settings



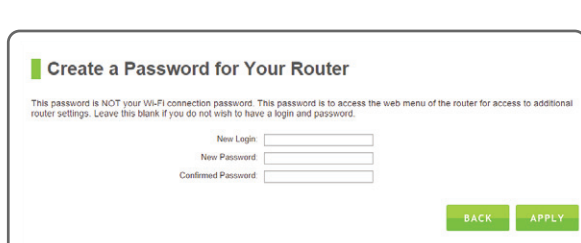
The default ID of your 5GHz Wi-Fi network and 2.4GHz Wi-Fi network is: **Amped_Helios_5_0_1**, **Amped_Helios_5_0_2** or **Amped_Helios_2_4**

Enter a new name in the SSID field. Users connecting wirelessly to the Router will use these IDs to identify your Wi-Fi networks.

The default Security Key of your Wi-Fi networks is: **wireless**

Enter a new key for both the 5GHz and 2.4GHz Wi-Fi networks in the Security Key field. The keys must be at least 8 characters long.

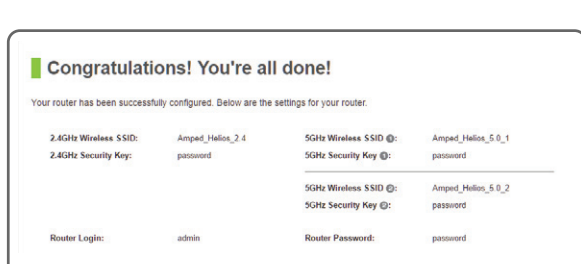
Create a Password for your Router



This password is NOT your Wi-Fi connection password. This password is to access the web menu of the Router to access additional router settings. Leave this blank if you do not wish to have a password. However, we recommend creating a password at this time for security purposes.

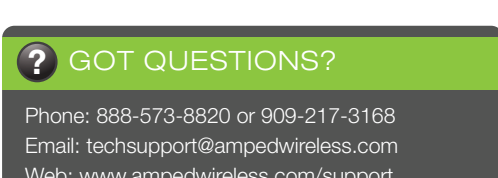
Click **Apply** to save your settings. The Router will reboot. This process may take up to 1 minute. The page will automatically reload after the countdown. If it does not, you may need to refresh the page manually or check your connection to the Router.

10 Setup Summary



Congratulations, the Router is now successfully configured and your settings are now saved. You may now connect additional devices directly to the 4 wired ports on the back panel or connect wirelessly to the Router.

The wizard will notify you if there is a newer firmware for the Router. We recommend that you upgrade your Router at this time if an update is available.



Dashboard

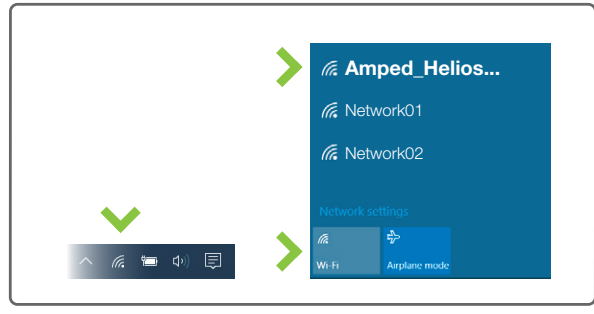


Once you have completed the Setup Wizard, you will now see the Dashboard when you access <http://setup.ampedwireless.com>. You will not see the Setup Wizard again. Through the Dashboard you can further adjust settings and access the features of the Router. Here you will find features like Guest Networks, User Access Controls, Wi-Fi Coverage Controls, Parental Controls and many other features.

How to Connect Wirelessly to the Router

Windows 10

Access the taskbar on the bottom right of your screen, tap on the Wi-Fi icon, enable Wi-Fi, and select [Amped_Helios_5.0_1](#), [Amped_Helios_5.0_2](#) or [Amped_Helios_2.4](#).



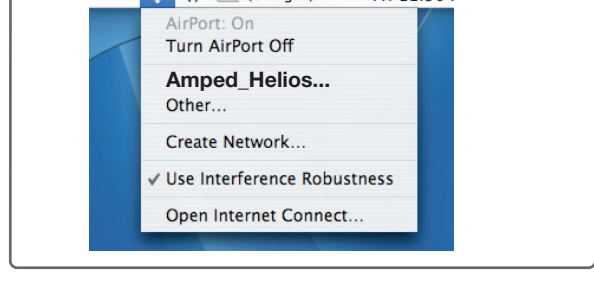
Windows 8

Swipe in from the right edge to access the charms bar, tap on Settings, select the Wi-Fi icon, and select [Amped_Helios_5.0_1](#), [Amped_Helios_5.0_2](#) or [Amped_Helios_2.4](#).



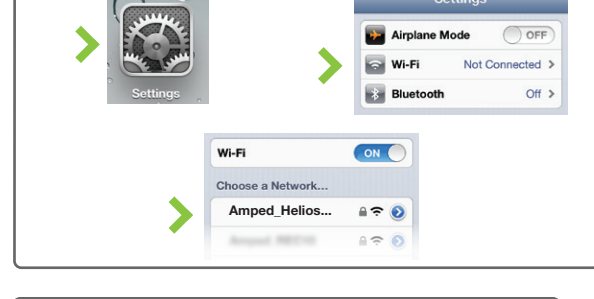
Mac OS X

Click on the Wireless icon to see available wireless networks. Select [Amped_Helios_5.0_1](#), [Amped_Helios_5.0_2](#) or [Amped_Helios_2.4](#).



iPhone

Tap on your Settings icon, select Wi-Fi, and choose the network, [Amped_Helios_5.0_1](#), [Amped_Helios_5.0_2](#) or [Amped_Helios_2.4](#).



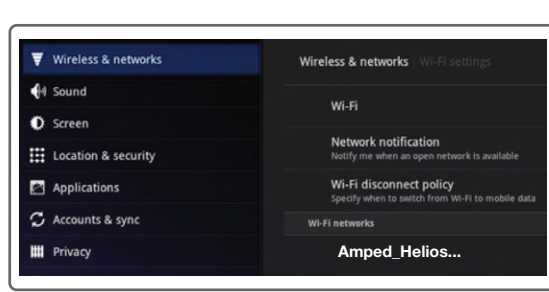
iPad Tablet

- Tap the "Home" button to get to the home page.
- Tap the "Settings" app icon.
- Tap on Wi-Fi to enter the iPad's Wi-Fi settings.
- Toggle the Wi-Fi "On/Off" selector switch to "On".
- Under "Choose a Network," select: [Amped_Helios_5.0_1](#), [Amped_Helios_5.0_2](#) or [Amped_Helios_2.4](#)



Android Tablet

- Tap the "Apps" menu on the tablet screen.
- Locate and tap the "Settings" app icon.
- Under "Wireless & networks," tap "Wi-Fi settings".
- Tap the Wi-Fi box to turn on Wi-Fi and scan.
- Under "Wi-Fi networks," select: [Amped_Helios_5.0_1](#), [Amped_Helios_5.0_2](#) or [Amped_Helios_2.4](#)



Wi-Fi Protected Setup (One-Touch Setup or Push Button Configuration)

If your Wi-Fi device has WPS one-touch setup, you can use it to connect to the Router:

- Hold down the WPS button on the Router (back panel) for 3 seconds. The Power LED will begin to blink.
- As it blinks, push the WPS button on your wireless adapter or enable WPS with the provided software for your wireless adapter. WPS will automatically configure the connection settings for your wireless adapter to connect to the Router.



Using the Features on the Router

The Router is equipped with many powerful security features which can be accessed through the web menu on the left side under [Smart Features](#), [Firewall Settings](#) and [Quality of Service](#):

<p>Web Menu (Left Side)</p>	<p>Wireless Access Scheduling Control when your Wi-Fi is on/off Location: 2.4 or 5GHz Wi-Fi Settings > Access Schedule</p>
	<p>User Access Control (MAC/IP) Restrict network access to specific users Location: Smart Features > User Access</p>
	<p>Wireless Coverage Control Adjust the distance of your wireless network Location: 2.4 or 5GHz Wi-Fi Settings > Wireless Coverage</p>
	<p>Block Websites Prevent access to specific websites Location: Smart Features > Block Websites</p>
	<p>Firewall Settings Protect your network from outside intruders Location: Firewall Settings</p>
	<p>Quality of Service (Prioritize Bandwidth) Manage your network bandwidth Location: Quality of Service</p>

If you are unfamiliar or want more information on how to set up Smart Features, Firewall Settings, or Quality of Service, please refer to the User's Guide at <http://support.ampedwireless.com/rta2200t>

LED Indicator Information

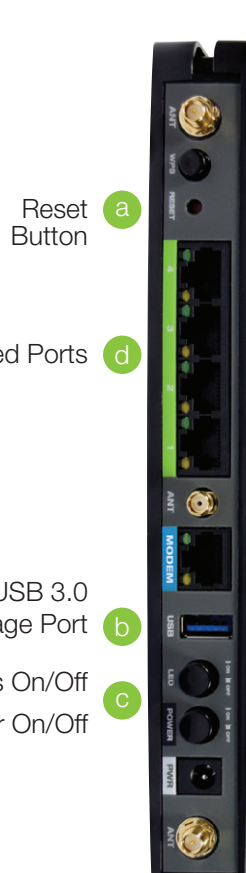
	Power:	Indicates when the Router is powered on. The LED will remain on.
	WPS:	Blinks when Wi-Fi Protected Setup (WPS) is activated and the Router awaits a connection.
	Internet Connection:	Indicates when the Router is connected to a broadband modem. The LED will blink rapidly when Internet traffic is transmitted or received.
	5.0GHz 1 Wireless Activity:	Blinks rapidly when data traffic is transmitted or received over the 5.0GHz 1 wireless network.
	5.0GHz 2 Wireless Activity:	Blinks rapidly when data traffic is transmitted or received over the 5.0GHz 2 wireless network.
	2.4GHz Wireless Activity:	Blinks rapidly when data traffic is transmitted or received over the 2.4GHz wireless network.

Additional Router Features

a Reset the Router to Default Settings

There are two options to reset the Router back to factory default settings:

- Access the Reset button through the web menu on the left side under [More Settings > Management > Save/Reload Settings](#). Select the [Reset Settings to Default](#).
- Access the physical Reset button on the back panel of the Router: Hold down the Reset button for five to ten (5-10) seconds. You may need to use a pen tip or pin to access the button. Pressing the Reset Button for less than five (5) seconds will simply reboot the Router while saving your existing settings.



b Share USB Storage Devices

- Connect a USB storage device to the USB 3.0 port.
- Log onto the web menu at <http://setup.ampedwireless.com> and click the [USB Storage](#) tab.
- Follow instructions for configuring settings to share USB storage device.

c Power & LED Lights On/Off

- Power On/Off: Push button to quickly turn the Router on or off.
- LED Lights On/Off: Push button to turn the LED indicators on the front of the Router on or off.

d Wired Port LEDs

- Indicates when a device is connected to a wired port (modem or local network) on the back of the Router. The LED blink rapidly when network data is transmitted or received. The green LEDs display when there is an active gigabit connection.

Troubleshooting Tips

PROBLEM: I entered setup.ampedwireless.com and it failed to open the Web Menu.

- SOLUTIONS:**
- Make sure your computer is connected to the Router using the included Ethernet cable. Ensure that the power on the Router is on.
 - Check that your computer is NOT connected to any wireless networks. If it is, disable your Wi-Fi connection and disconnect from all wireless networks. Reboot the Router and try again.
 - Close your current web browser and reopen it. Use Google Chrome, Internet Explorer (8.0 and up), or Safari.
 - Open your web browser and enter 192.168.3.1 into the web address bar.
 - Reset the Router to default settings by holding the Reset button (located on the back panel) for ten (10) seconds and try again. The Setup Wizard should appear. To access the Dashboard, complete or skip the Setup Wizard. The Setup Wizard appears only when the Router has not yet been configured.
 - If you still cannot access the menu, disconnect the Ethernet cable and connect wirelessly to the Router. Open your web browser to setup.ampedwireless.com.
 - If the Setup Wizard appears instead of the Dashboard, the Router has not yet been configured. Complete the Setup Wizard or skip the Setup Wizard to access the Dashboard.

PROBLEM: The Setup Wizard could not automatically configure my Internet connection.

- SOLUTIONS:**
- Reset your modem by holding down the Reset button located on the back of the modem for approximately ten (10) seconds. Try again.
 - Reboot the Router by unplugging the power adapter and plugging it back in.
 - Static IP: Your Internet connection may require a static IP setting. Check with your ISP to obtain the IP settings.
 - DSL Connection: Your Internet connection may require login information. If you are using PPPoE mode, you will need to manually configure your Internet connection settings and obtain your username and password.
 - Cable Modem: Your Internet connection may require you to clone your MAC address. Go to [More Settings > IP Settings > Network](#) (WAN) and select Automatic/Dynamic (DHCP) from the dropdown menu. Clone your PC's MAC address under the DNS Settings.