



### HIGH POWER AC1750 PLUG-IN WI-FI RANGE EXTENDER

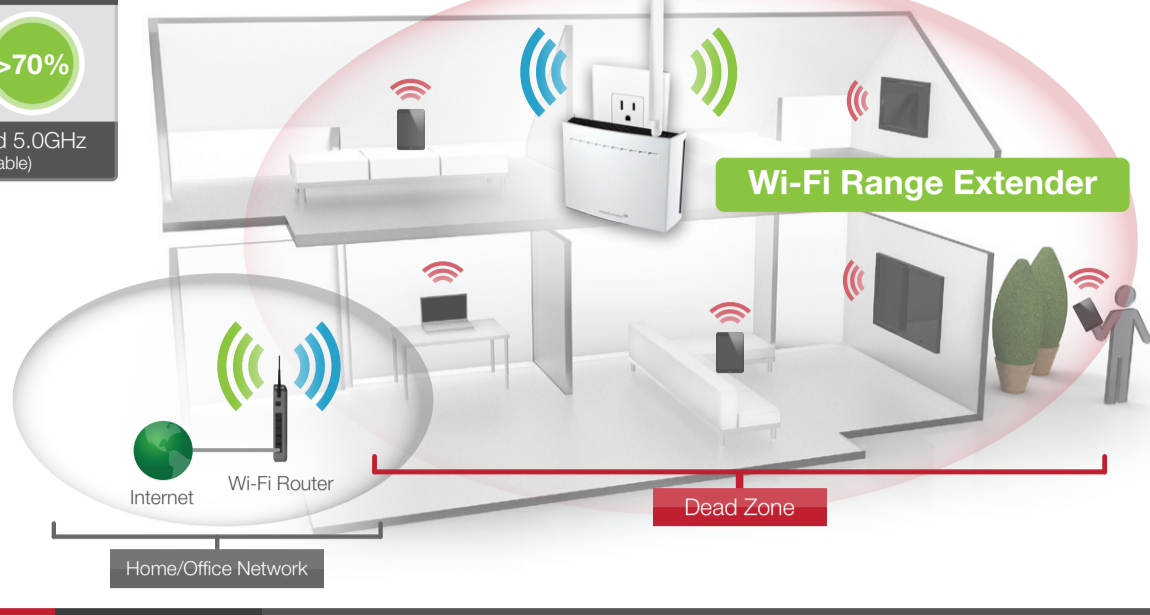
### REC33A

## 1 Find an Optimal Setup Location Between your Wireless Router & your Wireless Dead Zone

**RECOMMENDED SIGNAL STRENGTH**

**>70%**

2.4GHz and 5.0GHz (if available)



### IMPORTANT:

**RECOMMENDED SIGNAL STRENGTH**

**>70%**

2.4GHz and 5.0GHz (if available)

PLACE THE RANGE EXTENDER IN A LOCATION WHERE IT CAN RECEIVE A STRONG SIGNAL FROM YOUR WIRELESS ROUTER.

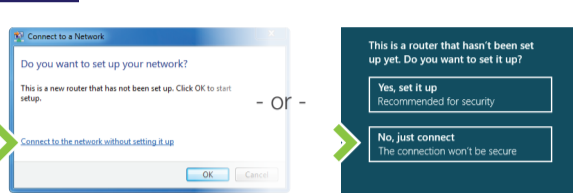
This can be done before or after setup is complete. The Range Extender will save your settings. If you are connecting to a dual band router, both 2.4GHz and 5.0GHz connections should be greater than 70%.

## 2 Connect your PC or Tablet to the Range Extender



- a Attach the included antenna.
- b Plug the Range Extender into a power outlet.
- c Connect to the Range Extender's Wi-Fi network: **Amped\_REC33A\_2.4** or **Amped\_REC33A\_5.0**.

**Attention Windows Users:**  
A prompt may appear asking: "Do you want to set up your network?" If so, select "Connect to the network without setting it up" or "No, just connect".



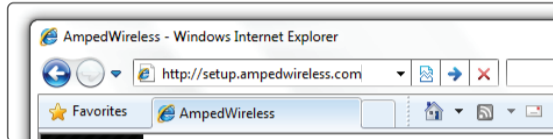
## 3 Open your Web Browser

Enter the setup web address into your browser:

<http://setup.ampedwireless.com>

If the URL fails to open, then try: <http://192.168.1.240>

Recommended browsers: Google Chrome, Safari or Internet Explorer (8.0 and up). Do not use Firefox.



ACCESSING THE WEB MENU DOES NOT REQUIRE INTERNET ACCESS. THE MENU IS SERVED FROM THE RANGE EXTENDER.

### IF YOU HAVE PROBLEMS ACCESSING THE WEB MENU...

- a Disconnect your PC from all Wi-Fi networks.
- b Attach an Ethernet cable (not included) between the PC and the Range Extender.
- c Open your web browser and go to <http://setup.ampedwireless.com> again.



## 4 Welcome to the Dashboard

**Welcome to the Dashboard**

Click Scan to find a Wi-Fi network to extend:

**SCAN**

The Dashboard will provide you with the current status of the Range Extender.

Click **Scan** to find available networks to extend.

## 5 Scan for a Home Network to Extend

**Select a Network to Extend**

Select your network and click **Next** below.

Rescan for networks: **RESCAN**

For Dual Band networks, select both 2.4 and 5.0GHz networks. Connecting to networks with poor signal strength (less than 70%) may cause the connection to be slow or unstable.

5.0GHz Home Network				2.4GHz Home Network			
	Ch.	Security	Signal		Ch.	Security	Signal
<input type="radio"/>	Amped_Wireless_Main	6 WEP-128	98%	<input type="radio"/>	Amped_Wireless_13	6 WPA/WPA2	98%
<input type="radio"/>	Amped_Wireless_01	2 WPA/WPA2	95%	<input type="radio"/>	Amped_Wireless_14	2 WEP-128	94%
<input type="radio"/>	Amped_Wireless_02	3 None	89%	<input type="radio"/>	Amped_Wireless_15	3 WPA/WPA2	90%
<input type="radio"/>	Amped_Wireless_03	8 WPA/WPA2	86%	<input type="radio"/>	Amped_Wireless_16	8 None	89%
<input type="radio"/>	Amped_Wireless_04	6 WPA	81%	<input type="radio"/>	Amped_Wireless_17	6 WPA	84%
<input type="radio"/>	Amped_Wireless_05	10 WPA2	69%	<input type="radio"/>	Amped_Wireless_18	10 WPA2	83%
<input type="radio"/>	Amped_Wireless_06	1 WEP-64	67%	<input type="radio"/>	Amped_Wireless_19	1 WPA/WPA2	80%
<input type="radio"/>	Amped_Wireless_07	7 WEP-128	65%	<input type="radio"/>	Amped_Wireless_20	7 None	69%
<input type="radio"/>	Amped_Wireless_08	8 WPA/WPA2	64%	<input type="radio"/>	Amped_Wireless_21	8 WPA/WPA2	60%

Highlight and select the wireless network(s) that you wish to repeat. If you have a dual band router, select BOTH the 2.4GHz and 5.0GHz network names.

**>70%**

### Recommended Signal

Select the wireless network with a signal strength greater than 70% for the most reliable connection.

Poor signal connections may cause slow speeds or dropped connections.

Click **Next** to continue.

If you do not see your desired wireless network, move the Range Extender closer to the router and scan again as it may be out of range.

## 6 Home Network Security Settings (if necessary)

**Security Settings (if necessary)**

If the Wi-Fi network (Home Network) that you are trying to connect to has security enabled, then enter the security key below. If your Home Network does not have security, then leave this field blank and click **Next**.

5.0GHz Wireless Network Security		2.4GHz Wireless Network Security	
Selected Network:	SSID: Network 2	Selected Network:	SSID: Network 1
Home Network Security Key:	Leave blank for networks without security	Home Network Security Key:	Leave blank for networks without security

If your wireless home network(s) has security enabled, you will need to enter the security key here. If you selected both a 2.4GHz and a 5GHz network to repeat, you will need to enter both security keys here.

If your wireless home network(s) does not have security enabled, leave the security field blank.

Click **Next** to continue.

## 7 Configure Settings for your Extended Networks

**Extended Network Settings**

Copy settings from your Home Network or manually configure them below: **Clone Settings**

5.0GHz Extended Network ID (SSID)		2.4GHz Extended Network ID (SSID)	
5.0GHz Extended Network Security Key	2.4GHz Extended Network Security Key		

The wizard is applying your settings and connecting to the Home Network.

The connection check will complete in 30 seconds.

The IDs of your Extended Networks are: **Amped\_REC33A\_2.4** and **Amped\_REC33A\_5.0**

If you choose to "Clone" the settings from your Home Network, the wizard will copy the SSID and security key of your Home Network.

The SSID of the Extended Network will have a "\_RE" at the end of its name. For example: Home\_Network\_RE

You can also manually enter a new network ID and security key. The new security key must be at least 8 characters long.

Click **Next** to apply the settings.

**DO NOT LEAVE OR REFRESH THIS PAGE**  
Allow the countdown to complete and the wizard will automatically redirect you to the next step.

## 8 Connect to the New Extended Network

**Connect to your Extended Network**

Go to your Wi-Fi connection manager and connect to one of your Extended Networks using the settings below.

5.0GHz Extended Network		2.4GHz Extended Network	
SSID:	Network 1	SSID:	Network 2
Security Key:	password	Security Key:	password

Select your operating system for instructions: **Windows 8**

**Confirm that you are now connected to your Extended Network:**  
Once you have confirmed, the **Next** button will appear below for you to complete the setup process.

During the countdown process, the Range Extender will reboot and disconnect the Wi-Fi connection. At this point, you will need to reconnect your PC or tablet to the new Extended Network. You may connect to either the 2.4GHz or 5.0GHz Extended Network. Follow the instructions on the screen to connect.

Once you have connected, click the check box to confirm. The **Next** button will appear allowing you to complete the setup process.

If there are problems with your configuration, the setup wizard will inform you to rescan for a network to extend.

If there are no problems, you will see the Setup Summary page below.

## 9 Setup Summary

**Setup Summary**

Congratulations, the Range Extender is now successfully connected to your Home Network.

Print this page for your records: **Print**

Set a login and password for the web menu: **Set Login**

Congratulations, the Range Extender is now successfully configured. Your settings are now saved.

You may also attach any wired network devices to the wired port on the bottom of the Range Extender.

If you experience any problems during this process, please contact Amped Wireless Elite Support:

Phone: 888-573-8820  
Email: [techsupport@ampedwireless.com](mailto:techsupport@ampedwireless.com)  
Web: [www.ampedwireless.com/support](http://www.ampedwireless.com/support)

If you haven't already positioned your Range Extender in an optimal location, you may do so now. All Range Extender settings are saved and can be safely powered off for relocation.

### Finding an Optimal Placement Location (Signal Strength LED)

The Range Extender is equipped with a Signal Strength LED on top of the device to help you find the most optimal location for the Extender. It may take 1-3 minutes for the LED to register and display after plugging the Extender into a wall outlet. After setup, the LED can be your guide when repositioning the Extender to a better location (if needed). We recommend a signal strength of 70% or greater from the Router. If the Signal Strength LED is green, your Range Extender is placed in an optimal location.



- Green: Excellent Signal 70-100%
- Yellow: Moderate Signal 60-69%
- Red: Poor Signal 59% and below

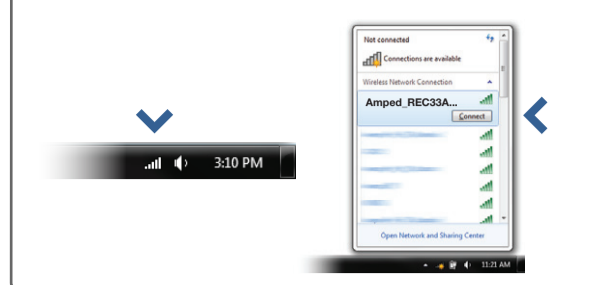
Note: The LED will not turn on if the Extender is not connected to a Home Network.

Connecting to the 5GHz network requires that you have a 5GHz capable network adapter.

## How to Connect to the Range Extender

### Windows 7 & Vista

Click on the Wireless icon to see available wireless networks (For Vista, click Start > Connect To). Select the "Amped\_REC33A\_2.4" or "Amped\_REC33A\_5.0" network and click **Connect**.



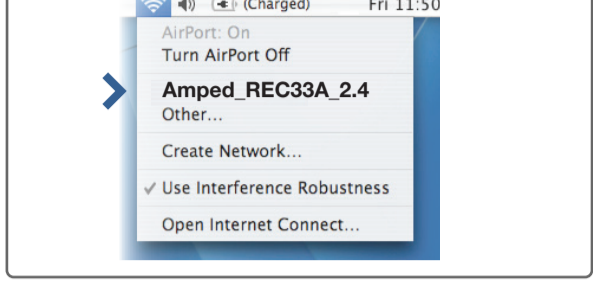
### Windows 8

Swipe in from the right edge to access the charms bar, tap on Settings, select the Wi-Fi icon, and select the "Amped\_REC33A\_2.4" or "Amped\_REC33A\_5.0" network.



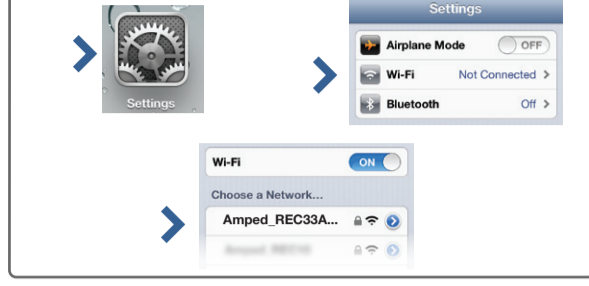
### Mac OS X

Click on the Wireless icon to see available wireless networks. Select the "Amped\_REC33A\_2.4" or "Amped\_REC33A\_5.0" network.



### iPhone

Tap on your Settings icon, select Wi-Fi, and choose the "Amped\_REC33A\_2.4" or "Amped\_REC33A\_5.0" network.



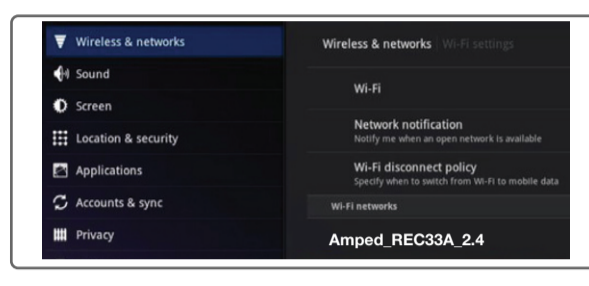
### iPad Tablet

- Press the "Home" button to get to the homepage.
- Tap the "Settings" app icon.
- Tap on Wi-Fi to enter the iPad's Wi-Fi settings.
- Toggle the Wi-Fi "On/Off" selector switch to "On".
- Under "Choose a Network...", select: "Amped\_REC33A\_2.4" or "Amped\_REC33A\_5.0".



### Android Tablet

- Tap the "Apps" menu on the tablet screen.
- Locate and tap the "Settings" app icon.
- Under "Wireless & networks," tap "Wi-Fi settings".
- Tap the Wi-Fi box to turn on Wi-Fi and scan.
- Under "Wi-Fi networks", select: "Amped\_REC33A\_2.4" or "Amped\_REC33A\_5.0".



## Wi-Fi Protected Setup (One-Touch Setup or Push Button Configuration)

If your wireless adapter has WPS one-touch setup you can use it when connecting to the Range Extender. Hold down the WPS button on the Range Extender (top panel) for 3 seconds. The WPS LED will begin to blink. As it blinks, push the WPS button on your wireless adapter or enable WPS with the provided software for your wireless adapter.



## Using the Features on your Range Extender

The Range Extender is equipped with many powerful features like BoostBand™ Technology and advanced security features, all of which can be accessed through the web menu:

More Settings

5.0GHz Wi-Fi Settings

2.4GHz Wi-Fi Settings

BoostBand Technology

Network Settings

Management

**2X BOOSTBAND™ Technology**  
Increase the overall speed and performance of your extended network by streamlining dual band network traffic through a single Wi-Fi frequency band between the Router and the Range Extender.  
*Menu Location: More Settings > BoostBand Technology*

**Wireless Access Scheduling**  
Control when your Wi-Fi is on/off.  
*Menu Location: More Settings > 2.4 or 5.0GHz Wi-Fi Settings > Access Schedule*

**User Access Control**  
Restrict network access to specific users.  
*Menu Location: More Settings > 2.4 or 5.0GHz Wi-Fi Settings > User Access*

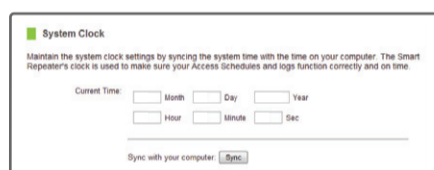
**Wireless Coverage Control**  
Adjust the distance of your wireless network.  
*Menu Location: More Settings > 2.4 or 5.0GHz Wi-Fi Settings > Wireless Coverage*

Web Menu (Left Side)

If you are unfamiliar or want more information on how to enable BoostBand™ Technology or the security features on the Range Extender, please refer to the User's Guide on the included CD.

## Setting the Range Extender's System Clock

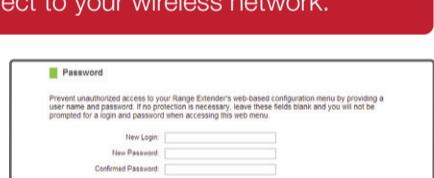
In order for your Access Schedules and logs to perform using the correct time stamps and schedules you will need to set your System Clock. To do so, go under **Management** access the **System Clock** tab to sync the System Clock with your computer's time or to sync with the Internet.



## Setting a Login and Password for the Web Menu

This login/password is NOT the wireless network key used to connect to your wireless network.

For added security you may want to set a login and password to access the Web Menu. To do this go to **More Settings > Management > Password** on the left side of the web menu.



If you forget your login and password, you will need to reset the Range Extender back to default settings to access the web menu. To reset the Range Extender to default settings, hold the reset button on the top of the Range Extender for 5-10 seconds.

## Tips: Power Outages, Rebooting Routers & Channel Changes

Wireless routers operate on specific wireless channels to avoid interference with neighboring networks. Some wireless routers are set to automatically scan for the best wireless channel. A power outage or a simple reboot may cause your home wireless router to change its wireless channel, causing the Range Extender to disconnect from your home network. **After a minute or two the Range Extender will automatically reconnect to your Home Network and your settings.** However, if for whatever reason it does not, simply log onto the Range Extender's web menu by opening your web browser and accessing <http://setup.ampedwireless.com>. If the page does not load, try resetting the Range Extender by holding down the reset button on the back panel for five to ten seconds. After the Range Extender has rebooted, open your web browser and try again.

When the web menu appears, run through the Wizard again to reconfigure the connection to your Home Network. To prevent the channel changing issue from occurring in the future, you may log onto your router's web menu and set the wireless channel from Automatic to a static channel number. You will need to reconfigure the Range Extender with the new channel. If you are not sure how to access your router's web menu, contact the support department for the brand of your wireless router.

## Tips: Autoloading Web Menu

When the Range Extender loses its connection with your Home Network, the Web Menu will automatically load on your web browser. All web address entries will be redirected to the Wizard of the Range Extender. This feature is meant for you to easily reconfigure your Range Extender in the event of a disconnection. This feature may be disabled in the IP Settings menu of the web menu. The feature is titled: Auto-DNS.

## Troubleshooting Tips

- PROBLEM:** I entered <http://setup.ampedwireless.com> and it failed to open the Web Menu.
- SOLUTIONS:**
- Make sure your computer is connected to the Range Extender's Wi-Fi network: "Amped\_REC33A\_2.4" or "Amped\_REC33A\_5.0".
  - Try to use a different web browser. We recommend the Google Chrome web browser.
  - Try to open your web browser to the default IP address by putting this number into your web browser instead: 192.168.1.240
  - Power off (unplug) the Range Extender and power it back on. Try again.
  - Reset your Range Extender to default settings by holding the Reset Button (located on the top panel) for ten (10) seconds and try again.
  - If steps (a) through (e) fail, disconnect your PC from all Wi-Fi networks. Attach an Ethernet cable between the Range Extender and your PC. Try to access <http://setup.ampedwireless.com> again.
- 
- PROBLEM:** My Range Extender was working fine previously, but now I can no longer access the Internet through the Range Extender.
- SOLUTIONS:**
- The connection to your Home Network may have been dropped or the router settings may have changed. Changes to the router could be a result of several events, such as a power outage. When this occurs, connect to the Range Extender and access the setup menu using the web address: <http://setup.ampedwireless.com>. Run the Wizard to reconnect the Range Extender to your network.
  - Using the setup menu ([setup.ampedwireless.com](http://setup.ampedwireless.com)) check to see that the signal strength between the Range Extender and your Home Network is above 70%. The Range Extender may be too far from your router and not maintaining a signal strength above 70%. Check the signal strength between the router and the Range Extender through the web menu (left side): More Settings > Management > Device Status. The Signal Strength readout will be under the Home Wireless Network Settings section. This Signal Strength must be above 70%. If it is below, move the Range Extender closer to your router, or reposition the Range Extender.
- 
- PROBLEM:** I cannot find my Home Network when scanning for wireless networks in the web menu Scan page.
- SOLUTIONS:**
- The Range Extender may be out of range. Move the Range Extender closer towards the wireless router and try the Setup Wizard again from the web menu.
  - Make sure that your Home Network's wireless SSID is broadcasting and not hidden. Hidden SSIDs will require that you manually enter the SSID into the Wireless Settings > Home Network menu.
- 
- PROBLEM:** I have a dual band router and I cannot repeat a network (or both networks).
- SOLUTIONS:**
- The Range Extender will repeat the 2.4GHz and 5.0GHz signal from your router simultaneously. To ensure a reliable and strong connection for both wireless networks, make sure that both 2.4GHz and 5.0GHz wireless networks have a signal strength above 70%. If necessary, reposition the Range Extender closer to the dual band router to help further maintain a strong connection.
  - Check to make sure that you have the correct security key for both the 2.4GHz and 5.0GHz network of your dual band router. These keys may sometimes be different from each other.
  - Ensure that your dual band router does not have any security features enabled, such as MAC address filtering, which may be blocking the connection. If features are enabled, please disable them and run the Wizard again.
- 
- PROBLEM:** I have extended my home network, but my Wi-Fi speeds seem slow or not at 802.11ac rates.
- SOLUTIONS:**
- To achieve 802.11ac Wi-Fi speeds for your extended network, it is necessary to extend an 802.11ac Wi-Fi router. Your extended network can only be as fast as the network it is extending.
  - Check that your computer's network adapter is an 802.11ac capable network adapter. Your computer's network connection can only be as fast as your network adapter's speed capabilities.
  - Using the setup menu ([setup.ampedwireless.com](http://setup.ampedwireless.com)) check to see that the signal strength between the Range Extender and your Home Network is above 70%. If it is below, move the Range Extender closer to your router, or reposition the Range Extender.
  - Check that the antenna is fastened tightly to the antenna port.
- 
- PROBLEM:** The Signal Strength LED on the top of the Range Extender is not on.
- SOLUTIONS:**
- Please check that the Range Extender is connected to a Home Network or router. The Signal Strength LED will not be on if there is no connection to a Home Network.
  - Check the connection to your Home Network may have disconnected. Please check your connection by accessing the web menu dashboard and reconfigure, if necessary.

If you continue to have issues setting up the Range Extender, give us a call — we're here to help: 888-573-8820  
Visit our website for more support information and answers to frequently asked questions: [www.ampedwireless.com/support](http://www.ampedwireless.com/support)