



— READ FIRST —

High Power 700mW Dual Band AC Wi-Fi Range Extender

REA20

1 Find an optimal setup location between your wireless router and your wireless dead zone

RECOMMENDED SIGNAL STRENGTH

>70%

2.4GHz and 5.0GHz (if available)

Single or Dual Band Wireless Router

AC Wi-Fi Range Extender

Network Bridge
Connect up to **5 GIGABIT** wired devices

- PCs/Laptops
- Network Storage
- A/V Devices and more!

IMPORTANT:

RECOMMENDED SIGNAL STRENGTH

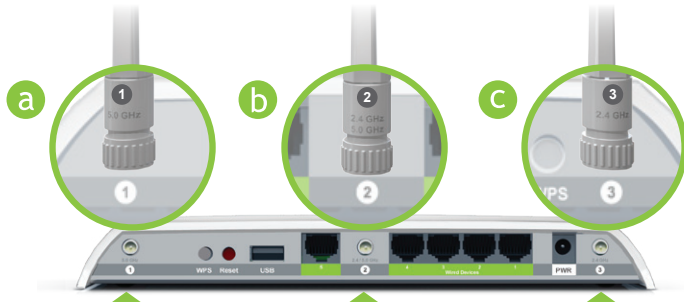
>70%

2.4GHz and 5.0GHz (if available)

PLACE THE RANGE EXTENDER IN A LOCATION WHERE IT CAN RECEIVE A STRONG SIGNAL FROM YOUR WIRELESS ROUTER

This can be done before or after setup is complete. The Range Extender will save your settings.
If you are connecting to a dual band router, both 2.4GHz and 5.0GHz connections should be greater than 70%.

2 Attach the Antennas to their Specific Connectors on the Range Extender



Attach the three included Antennas to their corresponding numbers:

- a** Antenna 1 (5.0GHz only) to Antenna Port 1
- b** Antenna 2 (2.4 and 5.0GHz) to Antenna Port 2
- c** Antenna 3 (2.4GHz only) to Antenna Port 3

3 Connect your Computer or Tablet to the Range Extender

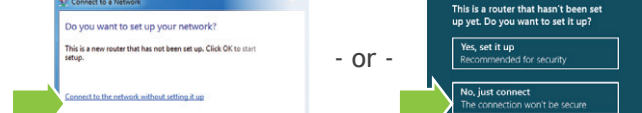


a Attach the Power Adapter to the Range Extender's **PWR** port and an available power outlet.

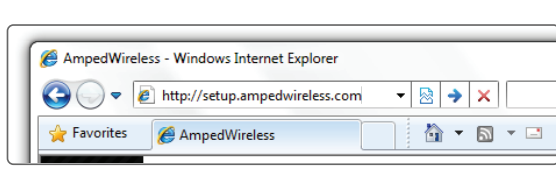
b Connect to the Range Extender's Wi-Fi network: **Amped_REA20_2.4** or **Amped_REA20_5.0** (See back for operating system specific instructions.)



Attention Windows Users:
A prompt may appear asking: "Do you want to set up your network?" If so, select "Connect to the network without setting it up" or "No, just connect".



4 Open your web browser



Enter the setup web address into your browser:

<http://setup.ampedwireless.com>

If the URL fails to open try: <http://192.168.1.240>

Recommended browsers: Google Chrome, Safari or Internet Explorer (8.0 and up). Do not use Firefox.

ACCESSING THE WEB MENU DOES NOT REQUIRE INTERNET ACCESS. THE MENU IS SERVED FROM THE RANGE EXTENDER.

IF YOU HAVE PROBLEMS ACCESSING THE WEB MENU...

- a** Disconnect your PC from all Wi-Fi networks.
- b** Attach an Ethernet cable between the PC and the Range Extender.
- c** Open your web browser and go to <http://setup.ampedwireless.com> again.



5 Welcome to the Dashboard

The Dashboard will provide you with the current status of the Range Extender.

Click **Scan** to find available networks to extend.

6 Scan for a Home Network to Extend

Highlight and select the wireless network(s) that you wish to repeat. If you have a dual band router, select BOTH the 2.4GHz and 5.0GHz network names.

Recommended Signal

>70% Select the wireless network with a signal strength greater than 70% for the most reliable connection.

Connecting to a weak signal may result in slower speeds or intermittent connectivity.

If you are connecting to a 2.4GHz and a 5.0GHz network, BOTH networks must have greater than 70% signal strength.

Click **Next** to continue.

If you do not see your desired wireless networks, move the Range Extender closer to the router and scan again as it may be out of range.

7 Home Network Security Settings (if necessary)

If your wireless home network(s) has security enabled, you will need to enter the security key here. If you selected a dual band network to repeat, you will need to enter both security keys here.

If your wireless home network(s) does not have security enabled, leave the security field blank.

Click **Next** to continue.

8 Configure Settings for your Extended Networks

The IDs of your Extended Networks are: **Amped_REA20_2.4** and **Amped_REA20_5.0**

If you choose to "Clone" the settings from your Home Network, the wizard will copy the SSID and security key of your Home Network.

The SSID of the Extended Network will have a "_RE" at the end of its name. For example: Home_Network_RE

You can also manually enter a 2.4GHz network ID and security key. The new security key must be at least 8 characters long.

Click **Next** to apply the settings.

DO NOT LEAVE OR REFRESH THIS PAGE
Allow the countdown to complete and the wizard will automatically redirect you to the next step.

9 Connect to the new Extended Network

During the countdown process, the Range Extender will reboot and disconnect the Wi-Fi connection. At this point, you will need to reconnect your PC or tablet to the new Extended Network. You may connect to either the 2.4GHz and 5.0GHz Extended Network. Follow the instructions on the screen to connect.

Once you have connected, click the check box to confirm. The **Next** button will appear allowing you to complete the setup process.

If there are problems with your configuration, the setup wizard will inform you to reconfigure a network to extend.

If there are no problems, you will see the Setup Summary page below.

10 Setup Summary

Congratulations, the Range Extender is now successfully configured. Your settings are now saved.

If you haven't already positioned your Range Extender in an optimal location, you may do so now. All Range Extender settings are saved and can be safely powered off for relocation.

You may also attach any wired network devices to the wired ports on the back of the Range Extender.

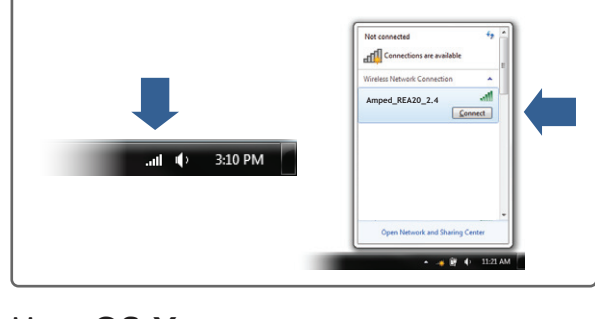
If you experience any problems during this process, please contact Amped Wireless Elite Support:

How to Connect your Wireless Computer to the Range Extender

Connecting to the 5.0GHz network requires that you have a 5.0GHz capable network adapter.

Windows 7 and Vista

Click on the Wireless icon to see available wireless networks (For Vista, click Start > Connect To). Select the "Amped_REA20_2.4" or "Amped_REA20_5.0" network and click Connect.



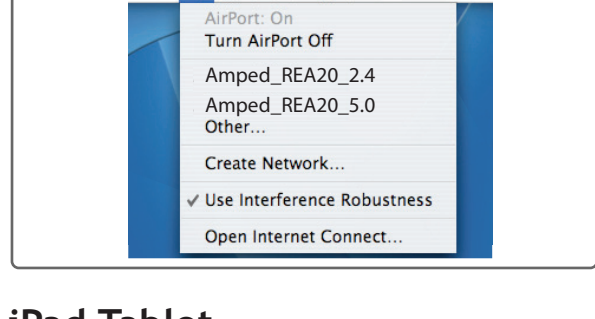
Windows 8

Swipe in from the right edge to access the charms bar, tap on Settings, select the Wi-Fi icon, and select "Amped_REA20_2.4" or "Amped_REA20_5.0".



Mac OS X

Click on the Wireless icon to view available wireless networks. Select the "Amped_REA20_2.4" or "Amped_REA20_5.0" network to join that network.



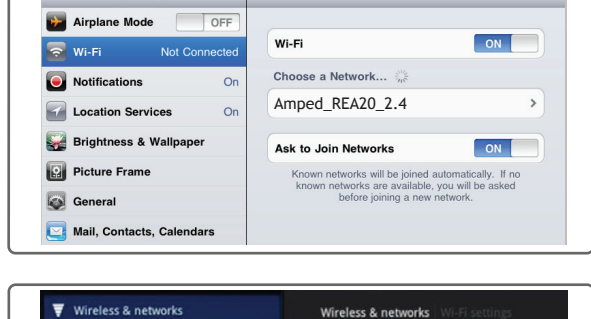
iPhone

Tap on your Settings icon, select Wi-Fi, and choose the network, "Amped_REA20_2.4" or "Amped_REA20_5.0".



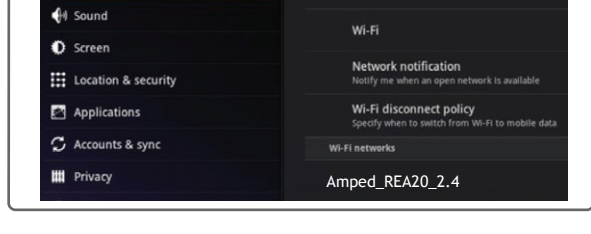
iPad Tablet

- Press the "Home" button to get to the home page.
- Tap the "Settings" app icon.
- Tap on Wi-Fi to enter the iPad's Wi-Fi settings.
- Toggle the Wi-Fi "On/Off" selector switch to "On"
- Under "Choose a Network," select: "Amped_REA20_2.4" or "Amped_REA20_5.0"



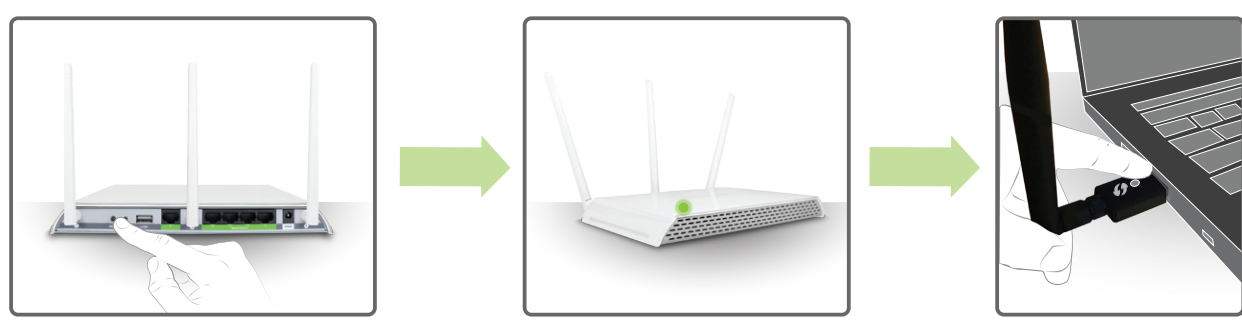
Android Tablet

- Tap the "Apps" menu on the tablet screen.
- Locate and tap the "Settings" app icon.
- Under "Wireless & networks," tap "Wi-Fi settings"
- Tap the Wi-Fi box to turn on Wi-Fi and scan.
- Under "Wi-Fi networks," select: "Amped_REA20_2.4" or "Amped_REA20_5.0"



Wi-Fi Protected Setup (One-Touch Setup or Push Button Configuration)

If your wireless adapter has WPS one-touch setup, you can use it when connecting to the Range Extender. Hold down the WPS button on the Range Extender (back panel) for 3 seconds. The Power/WPS LED will begin to blink. As it blinks, push the WPS button on your wireless adapter or enable WPS with the provided software for your wireless adapter.



Using the Features on your Range Extender

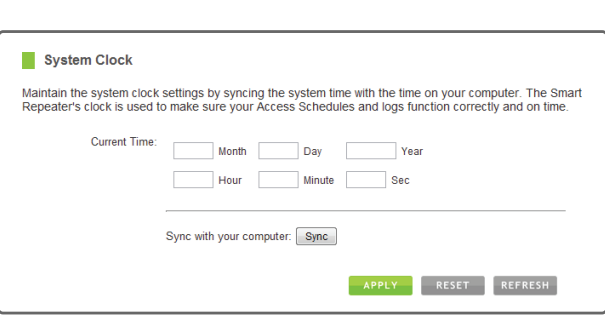
The Range Extender is equipped with many powerful security features which can be accessed through the web menu:

<p>Web Menu (Left Side)</p>	<p>Wireless Access Scheduling Control when your Wi-Fi is on/off Menu Location: 2.4 or 5.0GHz Wi-Fi Settings > Access Schedule</p>
	<p>User Access Control Restrict network access to specific users Menu Location: 2.4 or 5.0GHz Wi-Fi Settings > User Access</p>
	<p>Wireless Coverage Control Adjust the distance of your wireless network Menu Location: 2.4 or 5.0GHz Wi-Fi Settings > Wireless Coverage</p>

If you are unfamiliar or want more information on how to set up the security features on the Range Extender, please refer to the User's Guide on the included CD.

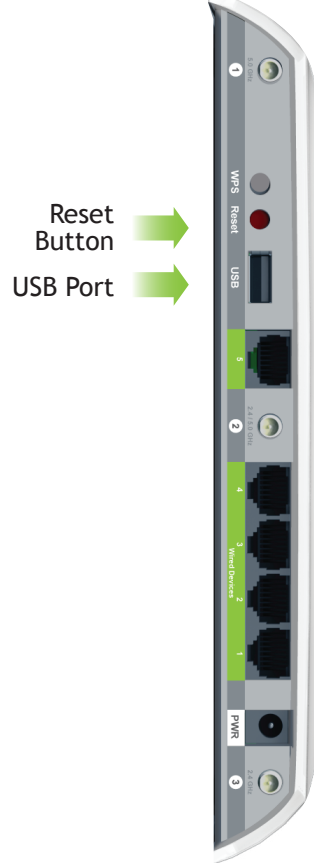
Setting the Range Extender's System Clock

In order for your Access Schedules and logs to perform using the correct time stamps and schedules you will need to set your System Clock. To do so, go under **Management** and access the **System Clock** tab to sync the System Clock with your computer's time.



How to Share USB Storage Devices

- Connect a USB storage device to the USB port on the back panel.
- Log on to the web menu at <http://setup.ampedwireless.com> and click the **USB Storage** tab.
- Follow the instructions for configuring the settings to share your USB storage device among locally connected users.



How to Reset the Range Extender to Default Settings

There are two options to reset the Range Extender back to factory default settings:

- Reset the Range Extender through the web menu (left side): **More Settings > Management > Save/Reload Settings**. Select the **Reset Settings to Default** button.
- Locate the Reset button on the back panel of the Range Extender. Hold down the Reset button for 5 - 10 seconds and release. You may need to use a pen tip or pin to access the button.

Setting a Login and Password for the Web Menu

The Range Extender does **not** have a default login or password to access the web menu.

It is strongly recommended that you change these settings and select your own personal login and password. The Password menu can be accessed through the web menu (left side): **More Settings > Management > Password**

LOGIN: _____
PASSWORD: _____

Password

Prevent unauthorized access to your High Power Dual Band Repeater's web-based configuration menu by providing a user name and password. If no protection is necessary, leave these fields blank and you will not be prompted for a login and password when accessing the web menu.

New Login: _____
New Password: _____
Confirmed Password: _____

APPLY RESET

This login/password is NOT the wireless network key used to connect to your wireless networks.

If you forget your login and password, you will need to reset the Range Extender back to default settings and use the default login and password (leave login and password blank) to access the web menu. View the instructions above on how to reset the Range Extender back to default settings.

Tips: Power Outages, Rebooting Routers and Channel Changes

Wireless routers operate on specific wireless channels to avoid interference with neighboring networks. Some wireless routers are set to automatically scan for the best wireless channel. A power outage, or a simple reboot, may cause your home wireless router to change its wireless channel and cause the Range Extender to disconnect from your home network. After a minute or two the Range Extender will automatically reconnect to your Home Network with the new settings. However, if for whatever reason it does not, simply log onto the Range Extender's web menu by opening your web browser and accessing, <http://setup.ampedwireless.com>. If the page does not load, try resetting the Range Extender by holding down the reset button on the back panel for five to ten seconds. After the Range Extender has rebooted, open your web browser and try again.

When the web menu appears, run through the Wizard again to reconfigure the connection to your Home Network. To prevent the channel changing issue from occurring in the future, you may log onto your router's web menu and set the wireless channel from Automatic to a static channel number. You will need to reconfigure the Range Extender with the new channel. If you are not sure how to access your router's web menu, contact the support department for the brand of your wireless router.

Autoloading Web Menu

When the Range Extender loses its connection with your Home Network, the web menu will automatically load on your web browser. All web address entries will be redirected to the Dashboard of the Range Extender. This redirect feature is meant to notify and help you to easily reconfigure your Range Extender in the event of a disconnection. You may disable this feature through the web menu (left side): **More Settings > Network Settings > IP Settings**. The feature is titled: Auto-DNS.

Wired Port Routing

The Range Extender automatically designates the Internet route for all devices connected through its wired ports. For example, if you are connected to a dual band network, computers connected to the back of the Range Extender may access the Internet through your 2.4GHz Home Network or your 5.0GHz Home Network. The Range Extender will automatically select an active route, however if you feel you need to change these settings you may do so via the web menu (left side): **More Settings > Network Settings > Wired Port Routing**

Troubleshooting Tips

- PROBLEM:** I entered <http://setup.ampedwireless.com> and it failed to open the Web Menu.
- SOLUTIONS:**
- Make sure your computer is connected to the Range Extender's Wi-Fi network: Amped_REA20_2.4 or Amped_REA20_5.0
 - Try to use a different web browser. We recommend the Google Chrome web browser.
 - Try to open your web browser to the default IP address by putting this number into your web browser instead: 192.168.1.240
 - Power off (unplug) the Range Extender and power it back on. Try again.
 - Reset your Range Extender to default settings by holding the Reset Button (located on the back panel) for ten (10) seconds and try again.
 - If steps (a) through (e) fail, disconnect your PC from all Wi-Fi networks. Attach an Ethernet cable between the Range Extender and your PC. Try to access <http://setup.ampedwireless.com> again.
-
- PROBLEM:** My Range Extender was working fine previously, but now I can no longer access the Internet through the Range Extender.
- SOLUTIONS:**
- The connection to your Home Network may have been dropped or the router settings may have changed. Changes to the router could be a result of several events, such as a power outage. When this occurs, connect to the Range Extender and access the setup menu using the web address: <http://setup.ampedwireless.com>. Run the Wizard to reconnect the Range Extender to your network.
 - Using the setup menu (setup.ampedwireless.com) check to see that the signal strength between the Range Extender and your Home Network is above 70%. The Range Extender may be too far from your router and not maintaining a signal strength above 70%. Check the signal strength between the router and the Range Extender through the web menu (left side): **More Settings > Management > Device Status**. The Signal Strength readout will be under the Home Wireless Network Settings section. This Signal Strength must be above 70%. If it is below, move the Range Extender closer to your router, or reposition the Range Extender.
-
- PROBLEM:** I cannot find my Home Network when scanning for wireless networks in the web menu Scan page.
- SOLUTIONS:**
- The Range Extender may be out of range. Move the Range Extender closer towards the wireless router and try the Setup Wizard again from the web menu.
 - Make sure that your Home Network's SSID is broadcasting and not hidden. Hidden SSIDs will require that you manually enter the SSID into the Wireless Settings > Home Network menu.
-
- PROBLEM:** I have a dual band router and I cannot repeat a network (or both networks).
- SOLUTIONS:**
- The Range Extender will repeat the 2.4GHz and 5.0GHz signal from your router simultaneously. To ensure a reliable and strong connection for both wireless networks, make sure that both, 2.4GHz and 5.0GHz wireless networks, have a signal strength above 70%. If necessary, reposition the Range Extender closer to the dual band router to help further maintain a strong connection.
 - Check to make sure that you have the correct security key for both the 2.4GHz and 5.0GHz network of your dual band router. These keys may sometimes be different from each other.
 - Ensure that your dual band router does not have any security features enabled, such as MAC address filtering, which may be blocking the connection. If features are enabled, please disable them and run the Wizard again.
-
- PROBLEM:** I have extended my home network but my Wi-Fi speeds seem slow or not at 802.11ac rates.
- SOLUTIONS:**
- To achieve 802.11ac Wi-Fi speeds for your extended network, it is necessary to extend an 802.11ac Wi-Fi router. Your extended network can only be as fast as the network it is extending.
 - Check that your computer's network adapter is an 802.11ac capable network adapter. Your computer's network connection can only be as fast as your network adapter's speed capabilities.
 - Using the setup menu (setup.ampedwireless.com) check to see that the signal strength between the Range Extender and your Home Network is above 70%. If it is below, move the Range Extender closer to your router, or reposition the Range Extender.
 - Check that your antennas are fastened tightly to the corresponding antenna ports. For example, Antenna 1 should be connected to Antenna Port 1 on the Range Extender.