

WELCOME

APOLLO PRO  
LONG RANGE HD WI-FI CAMERA

## GET STARTED

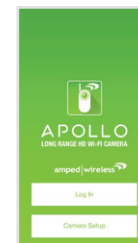
1 Find an installation location, attach the stand (a), attach the antenna (b), and plug in the Power Adapter (c). Do not mount your camera yet.



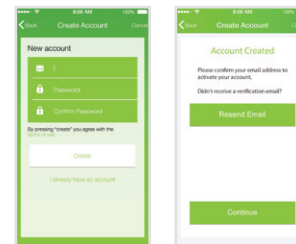
2 Download the Amped Wireless APOLLO Camera App for Android or iOS, on your phone or tablet.



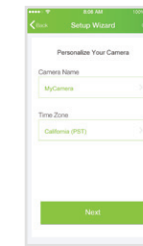
3 Open the App and tap **Camera Setup** to launch the Setup Wizard.



4 If you haven't already, you must now create an account. Once you tap **Create**, you will receive an email to verify your account. Follow the prompts in the email and then return to the App and press **Continue**.



5 Enter a name for your camera (i.e. Nursery). Tap **Next**.



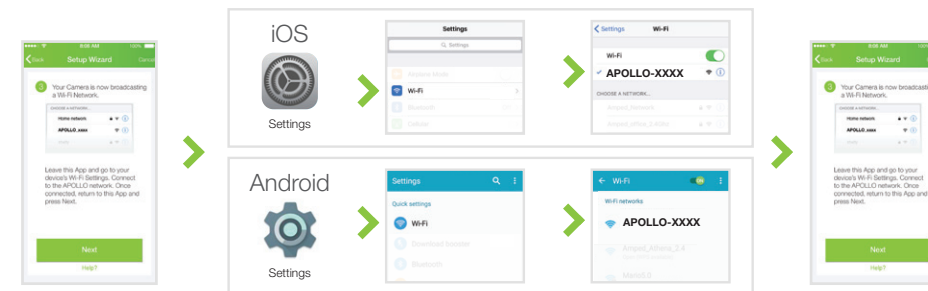
6 Press and hold the gray Setup button on the back of the camera for 3 seconds. The power LED on the front will begin to blink. Tap **Next**.  
If it does not blink, hold the button down for another 3 seconds.



7 The camera is now broadcasting a Wi-Fi network.

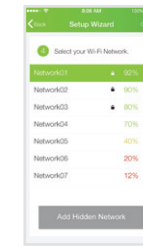
Leave the APOLLO App to access your device's Wi-Fi settings and connect to the network: **APOLLO-XXXX**

Your Wi-Fi Network Name can be found on the back of the camera. Once connected, re-open the APOLLO App and tap **Next**.

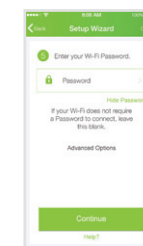


8 Select your Home Wi-Fi Network from the list.

We recommend a network that has a 50% or greater signal strength and is green or yellow. If the signal is red or you do not see your network, you need to move the camera closer to your router.

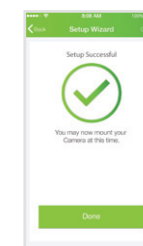


9 If needed, enter the password for your Wi-Fi Network. Tap **Continue**.



10 Once you see the Setup Successful page, setup is complete. You may now mount the camera and begin recording.

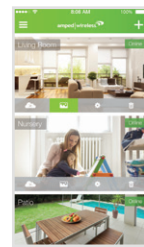
Your Free 30 Day Cloud Recording Trial starts once the camera has been setup. See **Get Cloud Recording** section (reverse side) for more information.



# EXPLORE THE APP

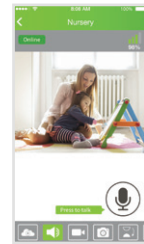
## Home Screen

Get a quick snapshot of every APOLLO Camera in your network, in one place. Here you can add or remove cameras and tap into each one for more actions.



## Camera View

Watch the live video feed and tap to hear the camera's audio, record what you see, talk back with 2-way audio, or adjust camera settings.



## Event Timeline

Scroll through a calendar of each camera's events. Recorded events like Motion Detection, Sound Detection or Full Time Recording are found here.



## Real Time Notifications

Receive instant or interval notifications from the camera when motion or noise is detected. Manage these alerts directly from the App.



## Viewing Features

Access and adjust a number of settings for each camera.

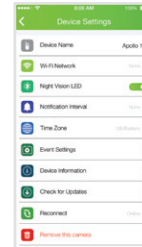
- View Cloud Recordings
- Listen to camera's audio
- Record video to your device
- Take a snapshot of the live feed
- Vertically flip the video
- Horizontally flip the video
- Choose the video quality
- Change the lighting mode
- Modify the brightness
- Adjust the contrast



## Camera & Notification Settings

Get a snapshot of your camera and APOLLO App settings.

- Connect to a new Wi-Fi Network
- Turn Night Vision LEDs on and off
- Choose your notification settings
- Change the camera's time zone
- Adjust the event settings
- See device information
- Reconnect to the camera
- Rename the camera
- Remove the camera



## Web Access

Live Camera feeds, recordings and settings are also accessible on the web.

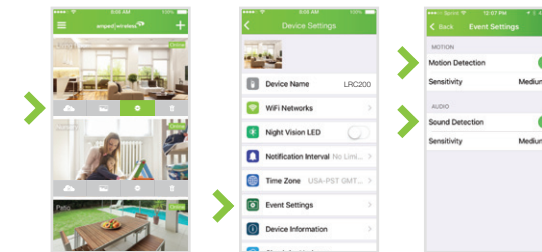
<http://apollo.ampedwireless.com>

# GET CLOUD RECORDING

Cloud Storage plans allow you to save, share, and revisit what your camera caught while you weren't looking. Your new APOLLO comes with a free 30 day trial, so you can see what it's all about. Cloud Recordings are triggered by events, motion or sound, and can be accessed on all of your devices.

## FREE Enable Your Free Trial

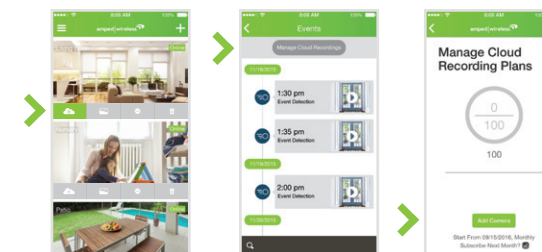
1. Open the APOLLO App.
2. Tap into Camera Settings.
3. Tap Event Settings.
4. Toggle on Motion and/or Sound Detection.



Tap Cloud Recording to view your recordings (events may take a few minutes to appear).

## Purchase Cloud Recording

1. Open the APOLLO App.
2. Tap into Cloud Recording.
3. Tap Manage Cloud Recording.
4. Log in and tap the upper-right menu.
5. Purchase a plan and add your camera to the plan.



Tap Cloud Recording to view your recordings (events may take a few minutes to appear).

For more detailed instructions, visit <http://www.ampedwireless.com/apollofaq>. To manage Cloud Recording via the web <http://apollo.ampedwireless.com>.

# MEET THE CAMERA



**Power LED**  
Notifies you that the camera is on and recording. During the setup process, it will blink rapidly once the Setup button is activated.

- Green Connected, Camera is online
- Orange Camera cannot connect to the cloud

**Wi-Fi Signal Strength LED**  
Glows red, yellow, or green to inform you of the strength of the Wi-Fi signal that the camera is receiving. It assists with the camera's installation, allowing you to maximize the camera's range.

- Green 100% - 70% Excellent signal
- Orange 69%-40% Good signal
- Red Less than 40% Poor signal, relocate camera

# ASK FOR HELP

If you are experiencing problems with your camera setup, please contact our U.S.-based Elite Support.

1-800-573-8820 or 1-909-217-3168  
techsupport@ampedwireless.com  
<http://www.ampedwireless.com/support>

